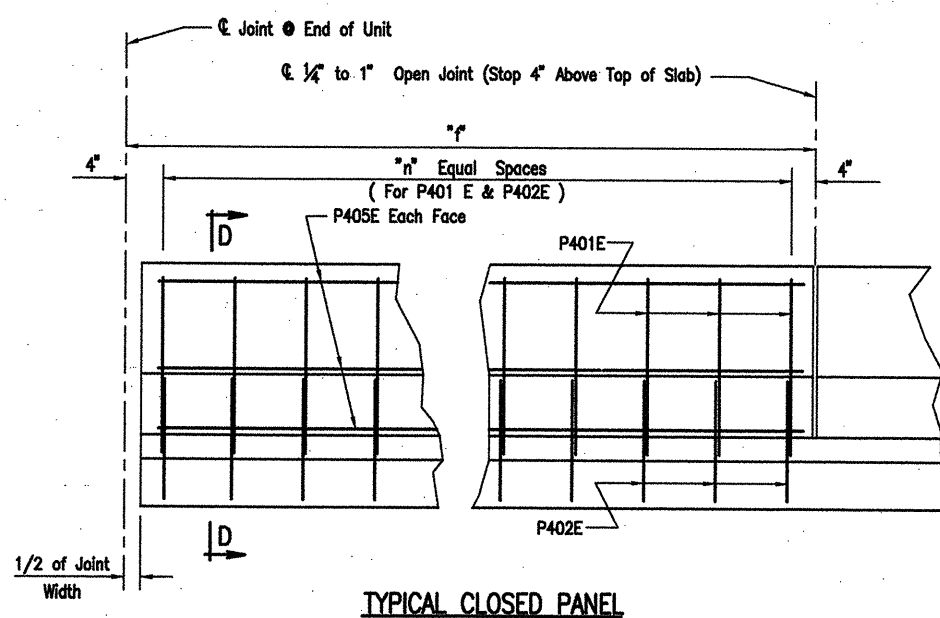


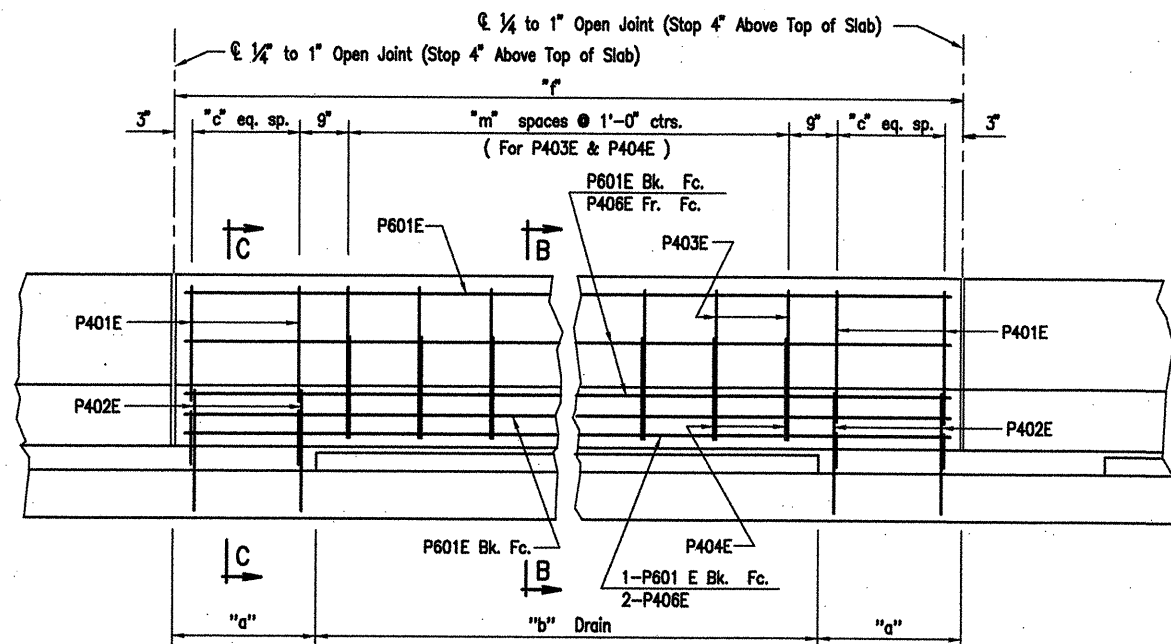
DATE REVISED	DATE FILMED	DATE REVISED	DATE FILMED	FED. ROAD NO.	STATE	FED. AID PROJ. NO.	SHEET NO.	TOTAL SHEETS
					ARK.			
				JOB NO.		110395	62	203
				06830		308' UNIT		47060

TABLE OF PARAPET VARIABLES

Panel Length	Closed Parapet Panel	Open Parapet Panel					Closed Or Open Panel
"f"	"n"	"a"	"b"	"c"	"m"	"r"	
5'-2"	6	-	-	-	-	-	11,439.2'
5'-2"	6	-	-	-	-	-	-
5'-2"	6	-	-	-	-	-	11479.2'
13'-3 1/16"	-	2'-8"	7'-11 1/16"	5	7	-	11,439.2'
13'-4 5/16"	-	2'-8"	8'-0 5/8"	5	7	-	11479.2'
13'-3 3/8"	-	2'-7 15/16"	8'-0"	5	7	-	-
13'-4 1/8"	-	2'-8 1/16"	8'-0"	5	7	-	-
13'-4"	-	2'-8"	8'-0"	5	7	-	-



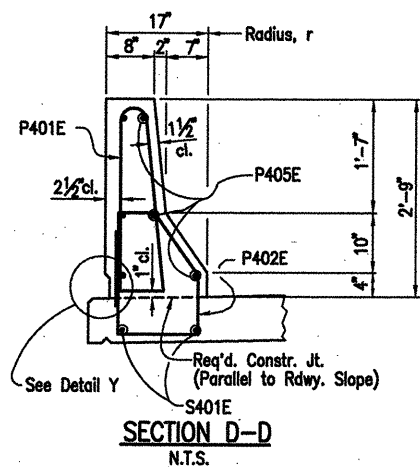
TYPICAL CLOSED PANEL



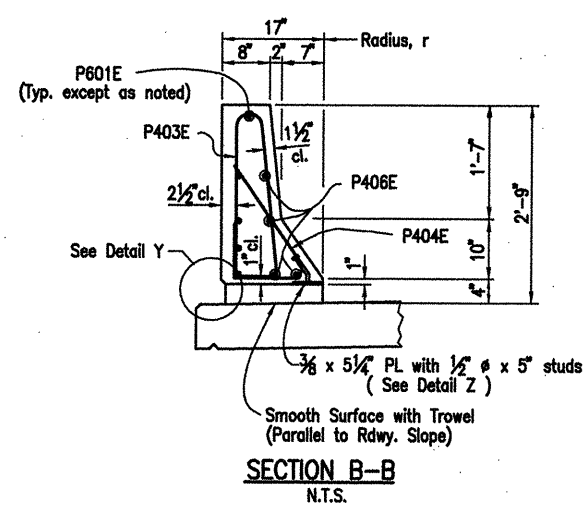
TYPICAL OPEN PANEL

ELEVATION OF TYPICAL PARAPET RAIL

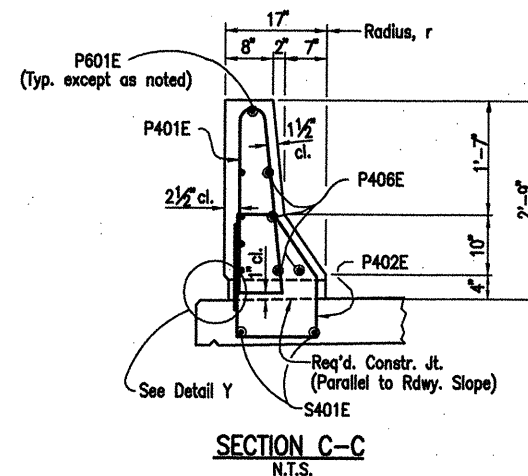
(As viewed from roadway side of parapet)
N.T.S.



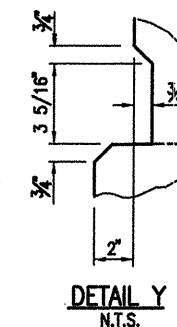
SECTION D-D
N.T.S.



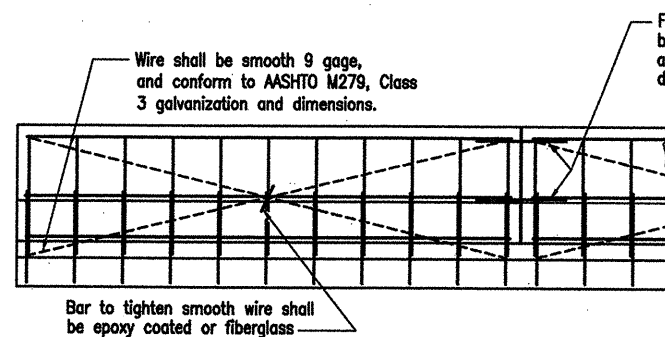
SECTION B-B
N.T.S.



SECTION C-C
N.T.S.



DETAIL Y
N.T.S.

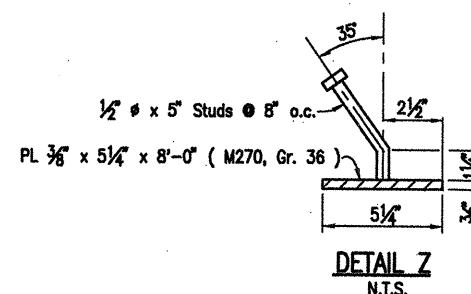


All panels shall be braced as shown to prevent racking. All open joints shall be sawed as soon as practical to a minimum width of 1/4\"/>

DETAILS OF OPTIONAL SLIPFORMING OF CONCRETE PARAPET RAIL (OPEN OR CLOSED)

N.T.S.

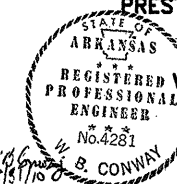
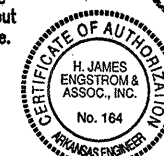
The extruded parapet shall conform to the horizontal and vertical lines shown on the plans or as directed by the Engineer and shall present a smooth, uniform appearance and texture.



DETAIL Z
N.T.S.

Note:

The surfaces of the 3/8\"/>



WHITE RIVER STR. & APPRS.
(CLARENDON) (PH III) (F)
MONROE COUNTY

ROUTE 79 SEC. 13

ARKANSAS STATE HIGHWAY COMMISSION
LITTLE ROCK, ARK.

Engstrom/Modjeski and Masters, Inc.

DRAWN BY: GPT DATE: Nov. 07 FILENAME: b11039511_s09
CHECKED BY: YO DATE: Mar. 01 SCALE: 6\"/>

BRIDGE NO. 06830 DRAWING NO. 47060